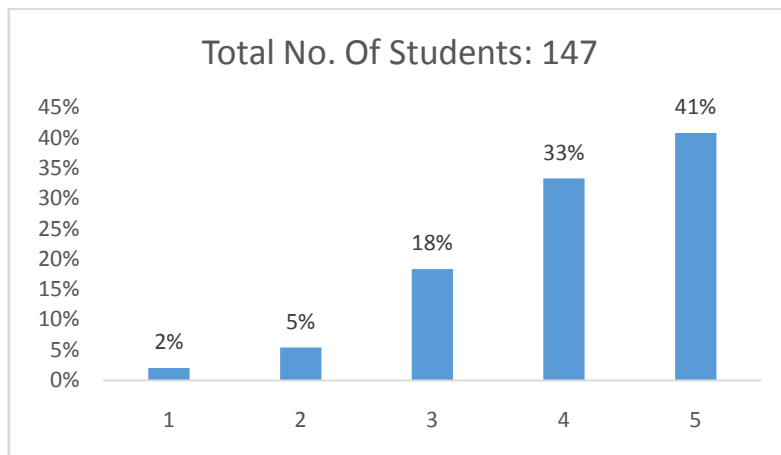
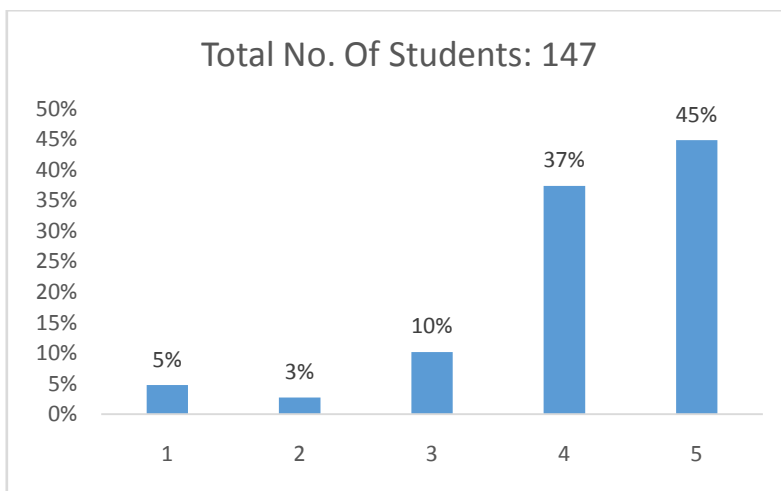


SGT COLLEGE OF PHARMACY

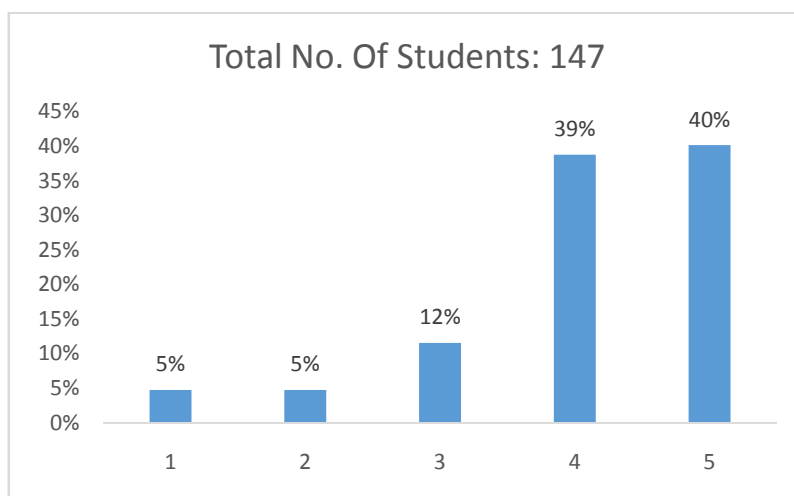
i) **Content of course is based on current professional needs and demand**



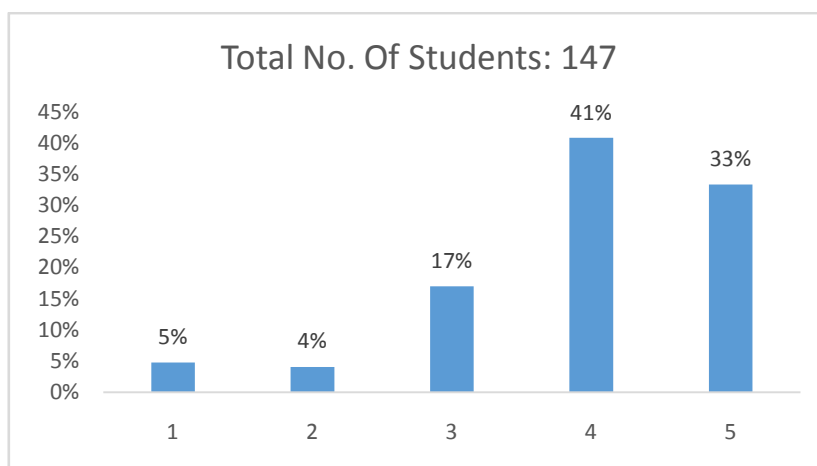
ii) **Practical's/Labs are given equal importance**



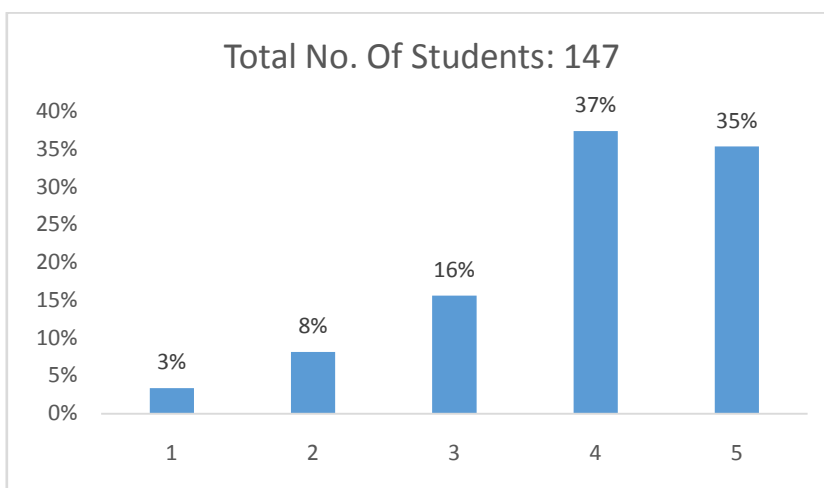
iii) **The practicals/lab experiments enhanced understanding of concepts of theory**



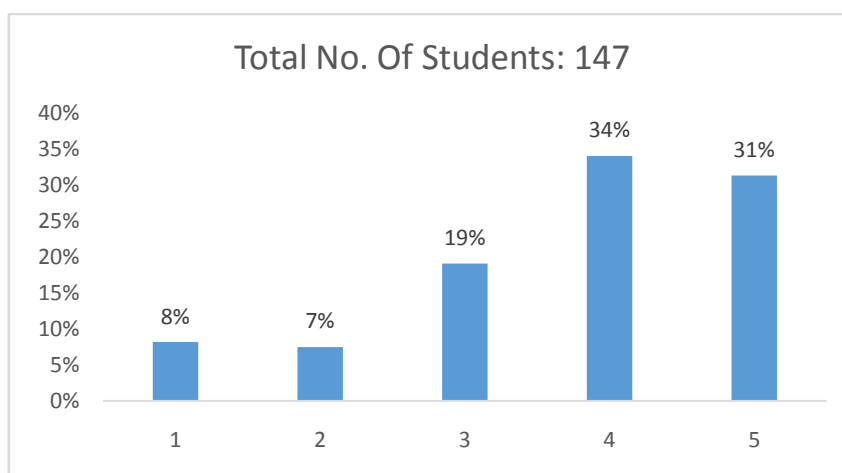
iv) Course content enhances technical skills to practice profession



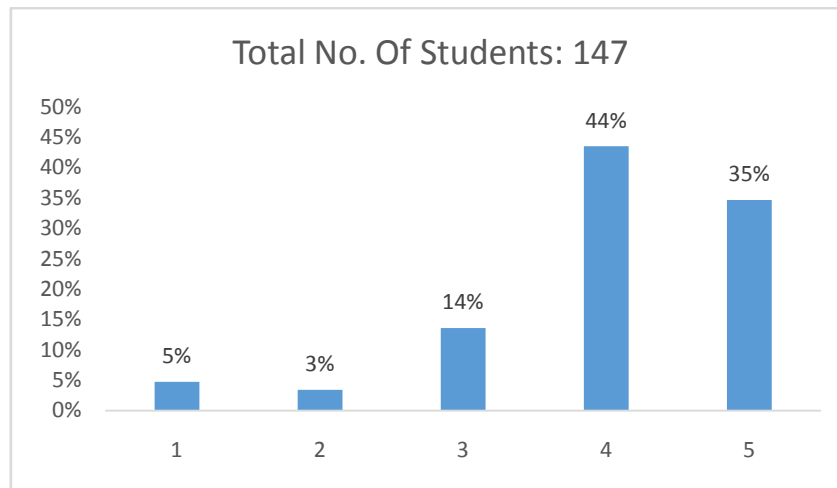
v) Adequate reference books are available in Library



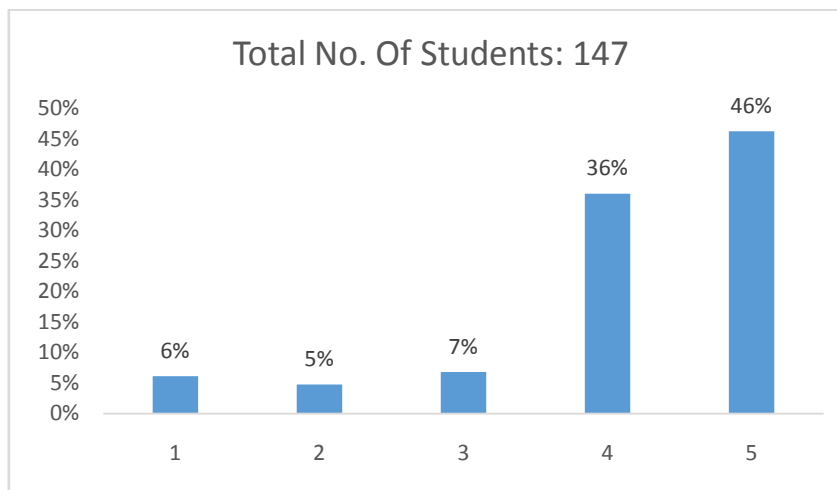
vi) Appropriate reference material (print & online) is provided



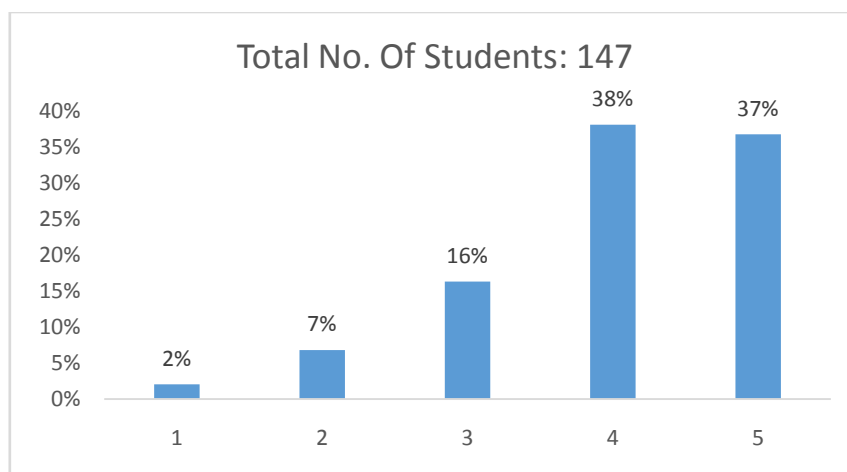
vii) Teaching methods encourage your participation in learning



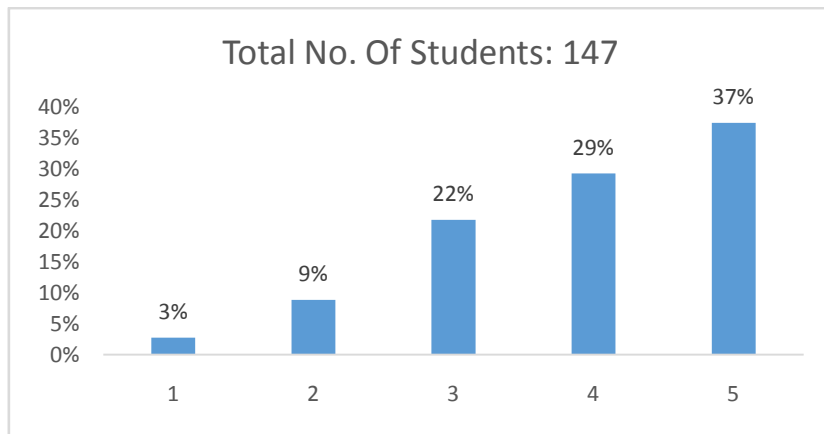
viii) Teacher is responsive to students needs and problems



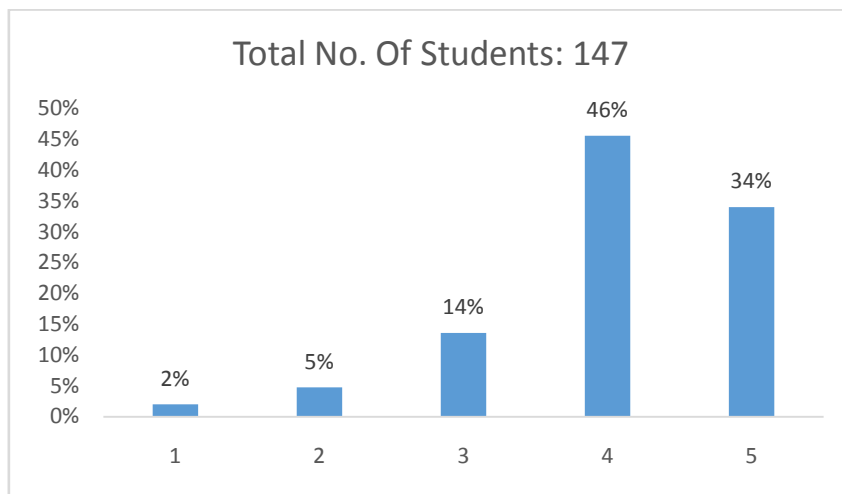
ix) The teacher's ability in explaining areas of confusion



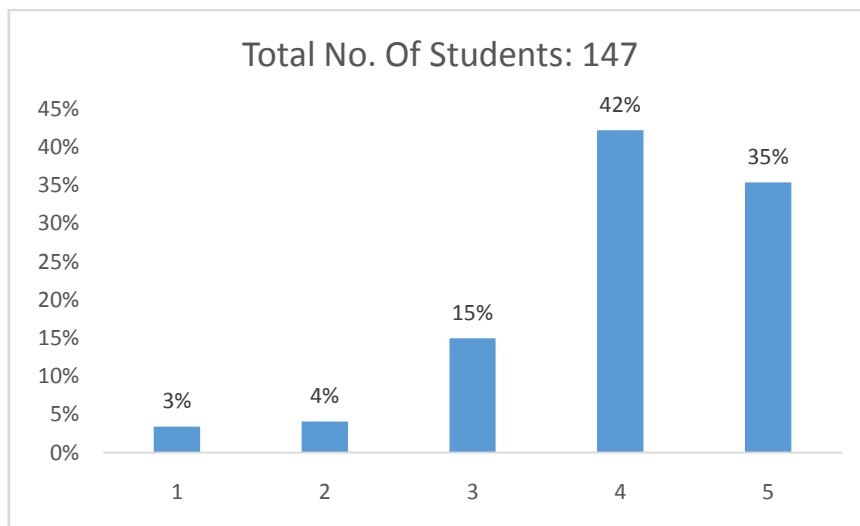
x) Overall environment in the class is conducive to learning



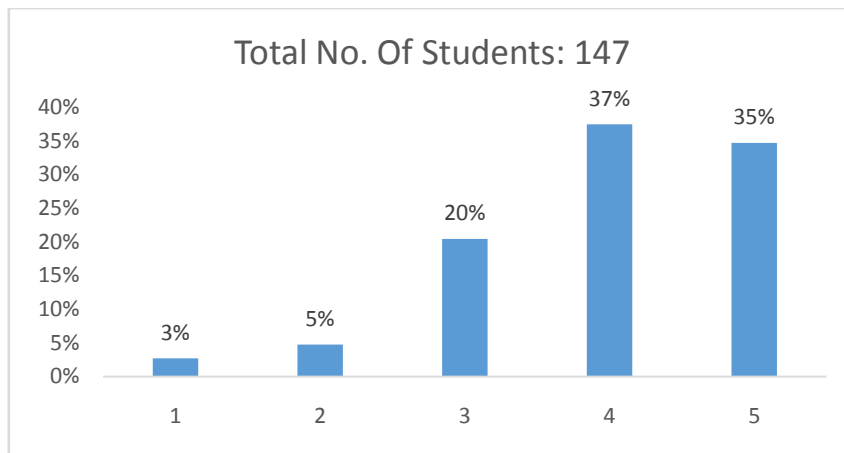
xi) The contents of syllabus were appropriately sequenced



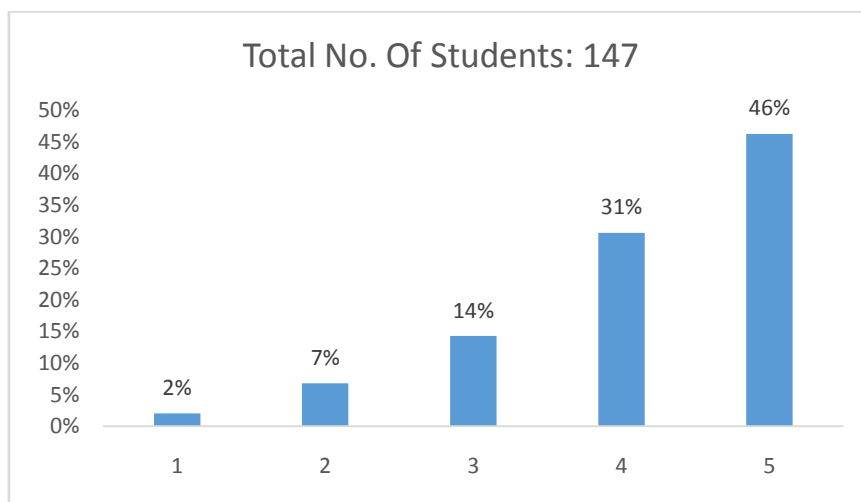
xii) The course content stimulated your interest in the subject area



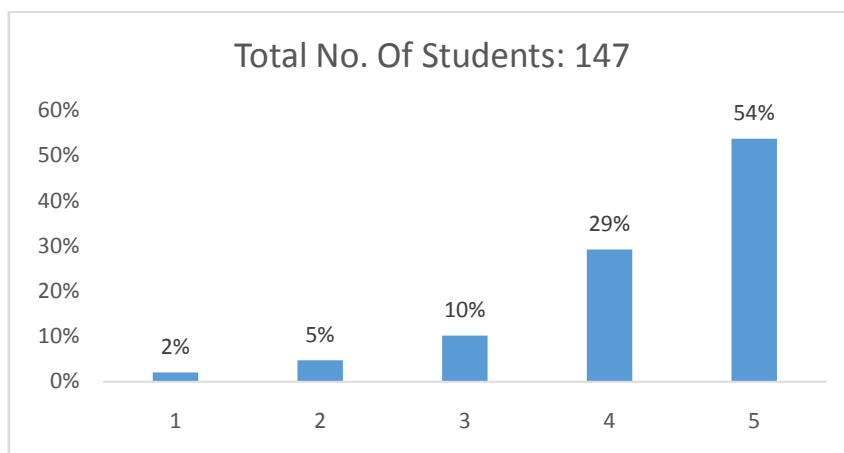
xiii) Syllabus was covered well within time



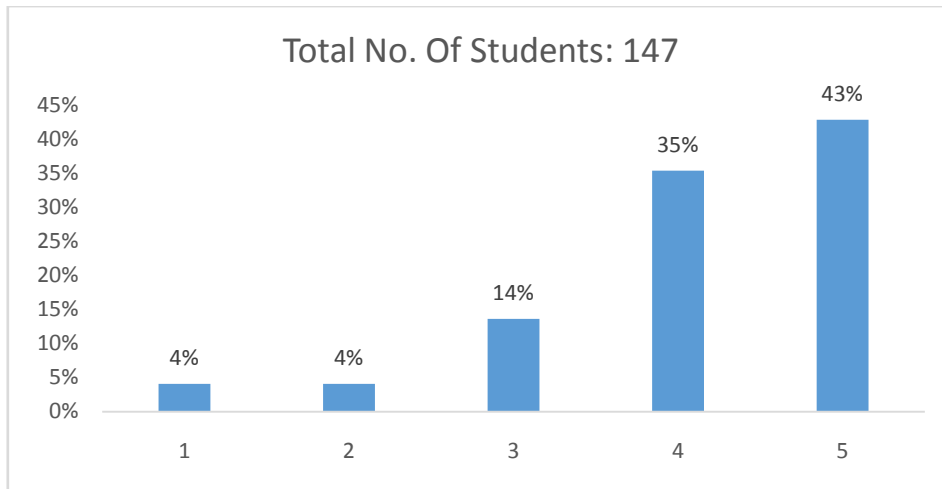
xiv) Tests and examinations are conducted well within time



xv) The sequence of internal/sessional examinations is helpful in covering the whole course content



xvi) Rate your experience with the inclusion of Objective type Questions in the Exam paper



xvii) Rate your satisfaction with the examination and evaluation pattern of the university

